

Applying vinyl graphics using the wet application method

Wet application is a favoured method when you have larger graphics which need installing. Especially when you have large sheets of frosted vinyl or large designs. For installing large or non-delicate vinyl graphics on windows or metal. Only use a Wet application on flat panels. Do not use wet application with metallic vinyl, when there is plastic application tape or when the design is very thin and delicate.

Tools

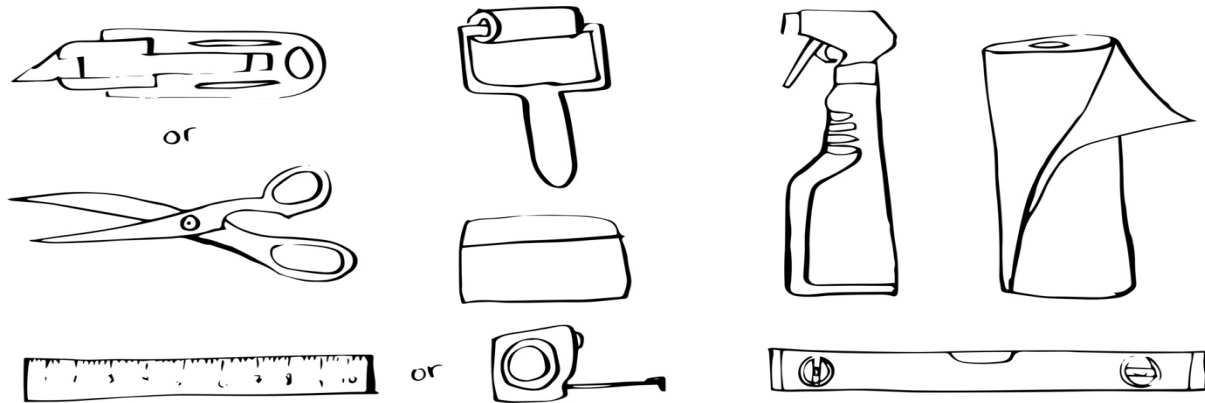
Masking tape

Tape measure

Squeegee or credit card wrapped in a soft cloth

Craft knife or scalpel

Application fluid or Spray bottle of water with a drop of fairy liquid



Wet application instructions guide

Firstly, you will need to clean the surface of your substrate. Making sure your application area is free from dirt, dust or grease is very important. Remember a vinyl graphic is as only as good as the surface it is being applied.

Careful to not clean the surface with strong cleaning products as these can weaken the adhesive. Soapy water or Methylate spirits is an ideal cleaning product to use when cleaning your application area.

Place your vinyl graphic face down on a workbench or a clean hard floor. Make sure your bench or flooring is clean. You don't want any dust or dirt coming into contact with the adhesive side of the vinyl as this will ruin the finish.

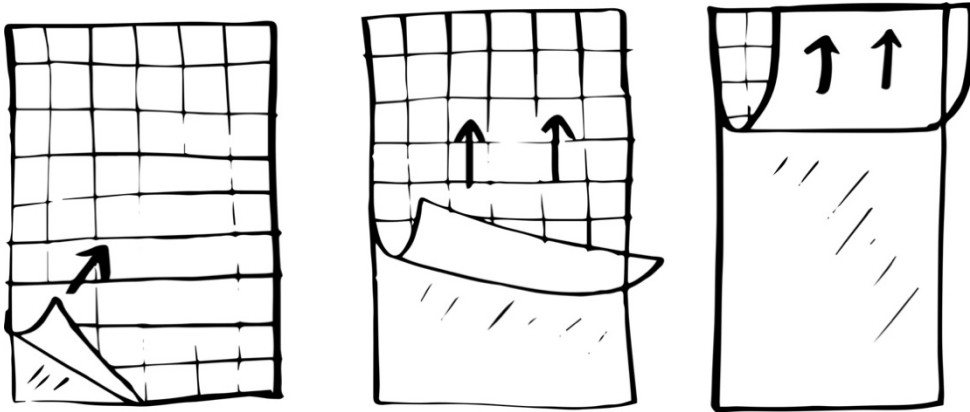


Peel Face Up & Spray the back of the vinyl

Place the vinyl graphic face down, with the back of backing paper face up. Peel the backing paper away from the vinyl. The adhesive side will be facing up towards you. (More detailed

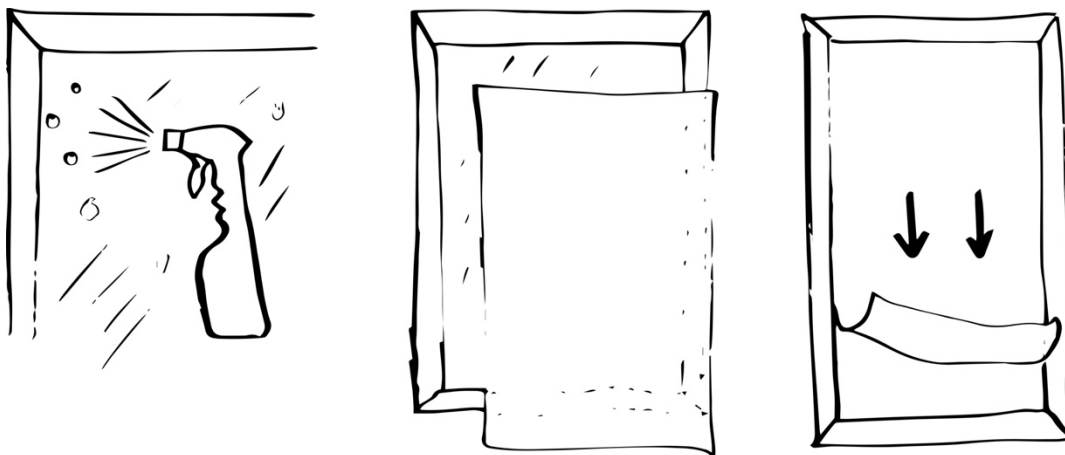
instructions on Website) Once the backing paper is removed, get your spray bottle and squirt a fine to medium mist over the entire sticky area. Keep the amount of fluid uniform and spray all the adhesive side with the same amount of water. Do not flood the vinyl as this will reduce its adhesion.

Do the same on the application area, whether this is a window or the side of a van. Spray the entire surface with the soapy solution.



Large frosted vinyl sheets

With large frosted vinyl sheets going onto glass, spray the application area first and place the face side of the panel to the glass and the moisture should hold the vinyl in place, then peel the backing paper off spraying the adhesive side of the vinyl as you go. Once the paper is off, make sure the whole vinyl is sprayed with application fluid then flip the design horizontally so that the adhesive side is now on the glass. Check the alignment. For areas without application tape it is recommended to not use the hard surface of the squidgey but either a roller or add a small cloth to soften the squeegee if it has sharp edges.



Placing the graphic

It's always best to get somebody to assist with this next stage, especially on larger graphics. Make sure your hands are clean, you don't want to be handling graphics with dirty or oily hands. Carefully pick up the vinyl from each corner. Do not drag along the floor or bench, pick up by two corners or if somebody is helping you pick up using all four corners. The key here is not to get any dust or dirt on the vinyl. Now bring the vinyl carefully over to the

application area. Hold the vinyl tight enough that it doesn't crease but not too tight as you don't want to stretch the vinyl.

Place the vinyl gently onto the surface. At this stage, you can use a tape measure to make sure you are happy with the positioning. If you are not happy with the positioning, you should be able to slide the vinyl into a better position. If you are struggling to slide the vinyl, then you can lift the vinyl from the window or panel and respray the surface to add more water and relay back into place.

Squeegeeing

Once you are happy with the position, you can now squeegee out the water. To squeegee start in the middle and work out from left to right, then moving towards the top of the panel do the same again moving left to right all the way up to the top of the graphic. Once you have removed the water from the top section, do the same working down, so go back to the middle and then work left to the right until you reach the bottom. You have now successfully removed the water and installed your vinyl graphic. If you want to, you can repeat the process to remove any additional water residue.

Small amounts of water might still be visible after application, and some areas on windows (if you are looking from the rear of the window so looking at the adhesive side) might look like there is some water or a small amount of ghosting. Ghosting is entirely normal. Once the vinyl has been in situ for 48 hours, the water residue will evaporate. Any larger bubbles once installed should be removed. You can do this by applying harder pressure with the squeegee working the water bubble along to the edge of the vinyl. You can remove water from larger bubbles using a pin to prick the vinyl and push out the fluid. Small creases can also be removed with gentle heat to the area and squeegeeing.